

# Clemson DPI Update

## SCBA Board of Directors 03/24/2025

### 2024 YLH as of 12/31/2024

- 796 YLH traps in Beaufort County & Jasper County
- 4,998 trap checks in Beaufort County & Jasper County
- 4,219 YLH caught in traps in Beaufort County & Jasper County
- 16 YLH Nests in Beaufort County
- \$34,900 in YLH nest removals
- 820 reports received using public reporting tools from across South Carolina and other states
- 18 reports received from Beaufort County of actual Yellow-legged hornets
- 3 reports received from Beaufort County of actual Yellow-legged hornet nests
- The top 5 counties with reports were Anderson, Beaufort, Greenville, Pickens, and Spartanburg **(the YLH has only been confirmed in Beaufort County and Jasper County)**
- The top 5 look a likes reported were Cicada Killer, European Hornet, Paper Wasp, Yellow Jacket, and Yellow Jacket Queen
- 530 gallons of Grape Juice purchased in 2024
- 864 pounds of Dark Brown Sugar purchased in 2024

### 2025 YLH Plan

- continue trap expansion with as many traps as possible in Beaufort County, Jasper County, Colleton County, and Hampton County
- establish a trap wall / northern boundary and fill in gaps with traps to capture as many YLH Queens as possible from now until April, and then as many YLH as possible
- develop and roll out a citizen trapping program (DIY Trap & Bait Videos / Instructions)
- continue public outreach efforts
- hunt and remove as many YLH nests as possible
- provide a monthly YLH newsletter update of YLH efforts beginning around the middle of February and continuing the middle of each month “The Hornet Herald”
- Waiting for final approval from USDA for 2025 YLH Agreement
- Hiring several YLH positions
- Participating in several YLH research projects (WVU, Florida DPI)

### 2025 YLH as of 03/24/2025

- 1,150 YLH traps in Beaufort County, Jasper County, Colleton County, and Hampton County
- 2,054 trap checks in Beaufort County, Jasper County, Colleton County, and Hampton County
- We are assessing YLH caught in traps in Beaufort County, Jasper County, Colleton County, and Hampton County to determine sex
- NO YLH nest found in 2025
- 204 gallons of Grape Juice purchased so far in 2025
- 778 pounds of Dark Brown Sugar purchased so far in 2025
- The Hornet Herald – A monthly blog released around the middle of each month to provide an update of YLH activities

## 2025 SCBA/NCBA Spring Beekeeper Conference

- YLH update
- DPI table at conference (YLH Road Show)
- Handing out YLH traps to beekeepers
- A trap database for citizen trapping

## 2025 SCBA Summer Conference

- Planning to attend the Summer Conference (need table space for Program efforts)

## 2024 DPI Apiary

### Honeybee Imports

- Permits - 39
- Queens – 1,500
- Packages – 2,888
- Colonies – 23,463

### Honeybee Exports

- Certificates - 62
- Queens – 14,600
- Packages – 4,950
- Colonies – 22,041

### National Honeybee Surveys

- 24 surveys completed (honeybee samples for Varroa Mites and Viruses)
- 10 surveys completed (wax tested for pesticides)

### Public Outreach

- Multiple SCBA events and meetings (Spring/Summer Conference, Board Meetings)
- Multiple local beekeeper associations (Waterlee Beekeepers, Lakelands Beekeepers, Aiken County Beekeepers, York County Beekeepers, Beaufort Beekeepers, Piedmont Beekeepers, Spartanburg Beekeepers)
- Apiary Inspectors of America
- SCFB Apiculture Committee meetings
- South Farm Bureau annual meeting
- USDA Farm Service Agency (FSA) SC annual meeting

## 2025 DPI Apiary

- **Proposed update to SC Legislatures for the SC Honeybee Regulations**
- **Reminder for Import Permits and Export Certificates for packages, queens, nucs, and colonies**

### Honeybee Imports (As of March 03/24/2025)

- Permits - 23
- Queens - 0
- Packages – 175 **LOCAL ASSOCIATIONS NEED TO GET IMPORT PERMITS**
- Colonies – 40,331

#### Honeybee Exports (As of March 03/24/2025)

- Certificates - 27
- Queens – 5,000
- Packages – 1,050
- Colonies – 10,520

#### National Honeybee Surveys

- 24 surveys completed (honeybee samples for Varroa Mites and Viruses)
- 10 surveys completed (wax tested for pesticides)

#### Public Outreach

#### Beekeeper Resources

DPI Apiary Inspection Webpage

- <https://www.clemson.edu/public/regulatory/plant-industry/honey-bee/index.html>

The Hornet Herald – A Monthly Blog Update on YLH Activities

- <https://blogs.clemson.edu/regulatory/hornet-headlines/>

YLH Landing Pages Clemson

- <https://www.clemson.edu/public/regulatory/plant-industry/invasive/ylh.html>

YLH Public Reporting Tool Link

- <https://survey123.arcgis.com/share/4654e1d5a6be4b47aa7acd2ff0a357cf>

YLH Look-A-Like Webpage Quick Guide

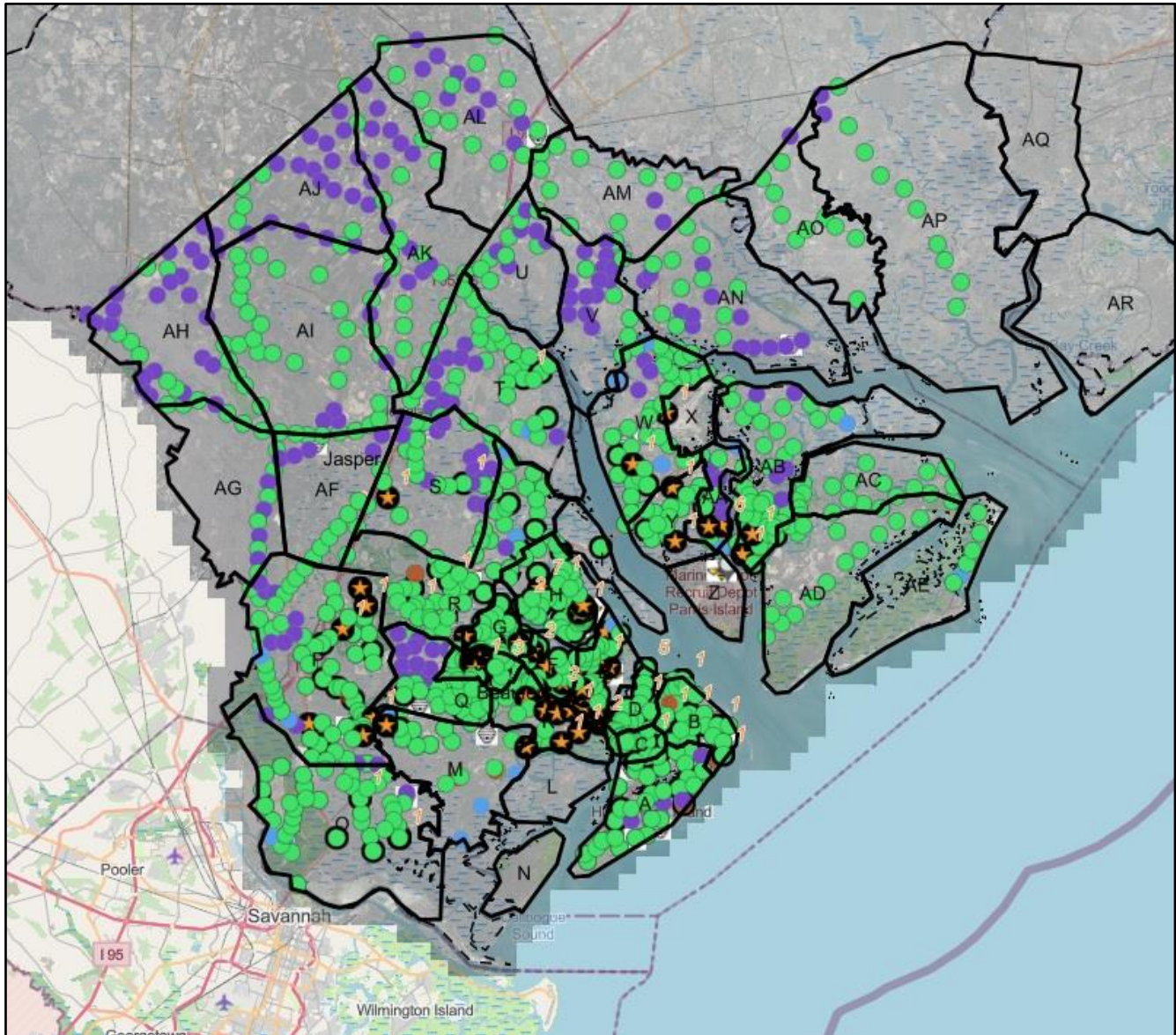
- <https://www.clemson.edu/public/regulatory/plant-industry/invasive/ylh-quick-guide.html>

Clemson Apiculture Land Grant Press YLH Publication



- <https://lgpress.clemson.edu/publication/asian-giant-hornet-vespa-mandarinia-and-yellow-legged-hornet-vespa-velutina-potential-pests-of-honey-bees/>


USDA YLH Landing Page

- <https://www.aphis.usda.gov/plant-pests-diseases/yellow-legged-hornet>



**YLH Hunting Grounds Trap Locations**  
**Beaufort County, Jasper County, Colleton County, & Hampton County**

-  Negative Trap
-  Initial Trap Set

-  Positive Trap for YLH

**Current trap number 1,150 as of 03/24/2025**  
**204 gallons of Grape Juice purchased so far in 2025**  
**778 pounds of Dark Brown Sugar purchased so far in 2025**



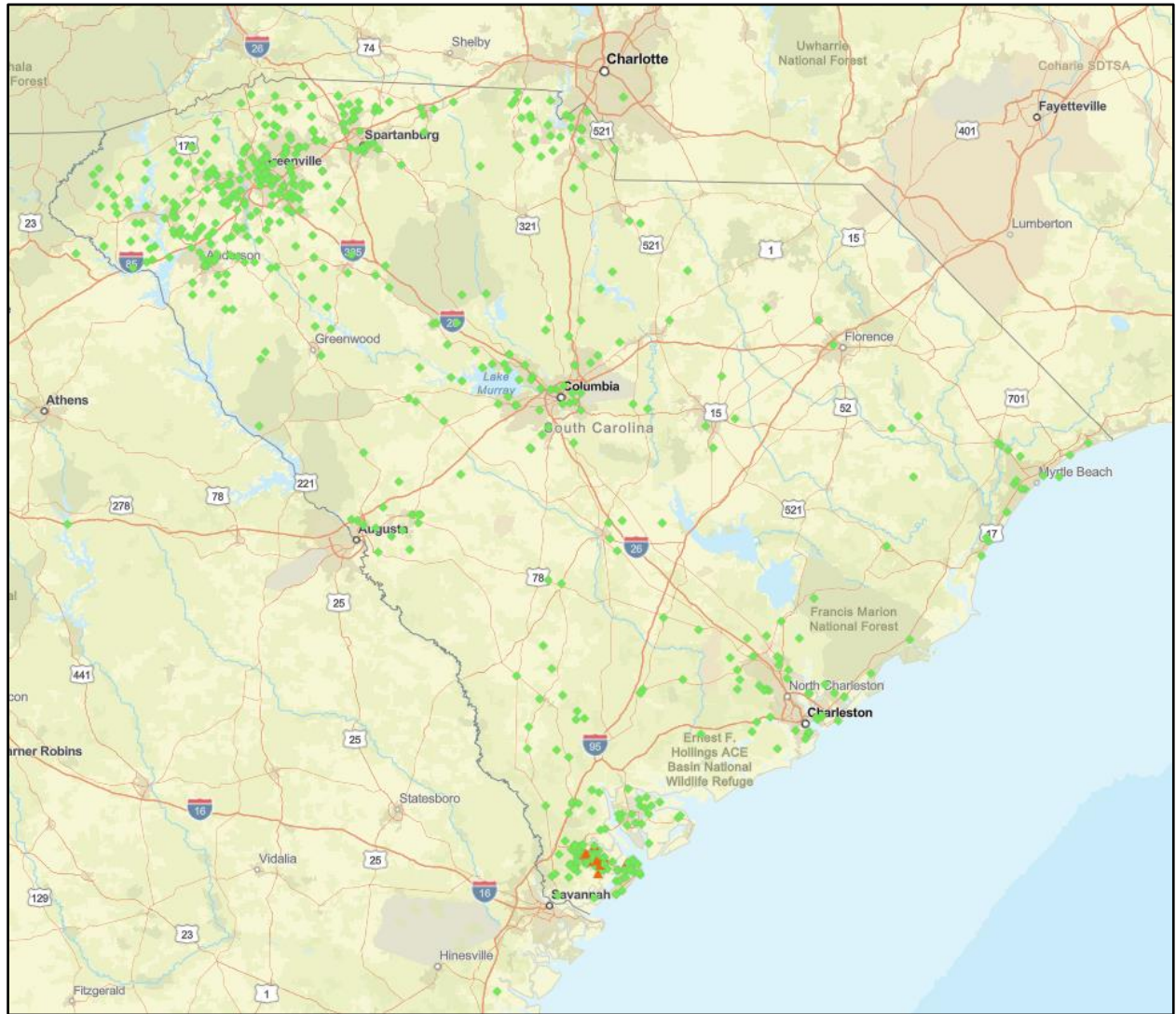


**2024 YLH Nests**



**Pin Placemark of YLH Nest Locations**

**16 YLH Nests in 2024**



**2024 YLH Public Reports**



**Negative Report for YLH**



**Positive Report for YLH**

**820 Public Reports for YLH**



# The Hornet Herald

<https://blogs.clemson.edu/regulatory/hornet-headlines/>

CLEMSON

## Hornet Herald

Posted on February 17, 2025 by [admin](#)

### FEBRUARY 2025 UPDATE ON THE YELLOW-LEGGED HORNET IN SC

#### Introduction

Our goal is to keep you informed about the Yellow-legged Hornet (YLH) infestation in South Carolina. Supporting community relationships are essential in the success of detecting, tracking, and removing this pest. This update is being issued to collaborators, communities, and stakeholders, and we invite you to share this information with anyone who may be affected by our operations.



Photo credit: John De Carman, Jerry Ross, Oregon Group

#### Background

**What happened?** In August 2023, Vespa velutina, Yellow-legged Hornet (YLH) was detected in the United States for the first time near Sausalito, CA, less than 100 miles from the South Carolina Georgia border. In Spring 2024, several YLH queens and one embryo nest were found in Horry County YLH worker decastacks continued through summer 2024.

**Why do we care?** Yellow-legged Hornets prey on honeybees, causing reduced foraging and colony failure. This impact would result in reduced honey and other honeybee products and reduced crop production due to decreased pollination by honeybees and other pollinators.

**What are we doing?** With the support of USDA APHIS, Clemson's Honeybee Protection Program surveys for YLH focuses on detecting workers and finding nests within a wide area around the initial detection. Baited traps are used to initially detect hornets, followed by tracking live hornets to narrow down the nest search area. If locations of this species focuses on locating and destroying nests and eliminating queens. Nests should ideally be located and destroyed by late summer or very early fall before new queens are actively mating and dispersing, and nest destruction should continue throughout the fall and early winter. From mid-summer through the end of 2024, Clemson's Honeybee Protection Program found 10 YLH nests and removed or destroyed 15 of those nests. In 2025, the 15th and most recent nest destroyed so far was removed.

**What does it look like?**

- **Body length:**
  - Ranges from 0.7 – 1.0 inches
- **Coloration:**
  - Head: Mostly black with some brown tacing yellow/orange; Black eyes
  - Thorax: Mostly solid black/dark brown
  - Abdomen: Alternating bands of dark brown/black and yellow/orange
  - Legs: Brown or black near the body, ending in yellow segments



Photo credit: Catherine Gonzalez/Flora Images

**Categories**

- Ag Services Lab
- Asian Longhorned Beetle
- Fireblow & Soot
- Invasive Species
- Pesticide Regulation
- Plant & Pest Diagnostic Clinic
- Plant Industry
- Uncategorized
- Yellow-legged Hornet

**Archives**

- February 2025
- January 2025
- December 2024
- September 2024
- August 2024
- July 2024
- June 2024
- May 2024
- April 2024
- March 2024
- February 2024
- January 2024
- December 2023
- November 2023
- October 2023
- September 2023
- August 2023
- July 2023
- June 2023
- May 2023
- April 2023
- January 2023
- December 2022
- November 2022
- November 2021

## To subscribe:

1. Create a new email message to [listserv@lists.clemson.edu](mailto:listserv@lists.clemson.edu)

2. In the body of the message, type the following: subscribe listname First Last

Example: subscribe SCYLHNEWSLETTER Jane Doe

3. If there is an email signature in the body of the message, you must remove it, so it does not interfere with Listserv reading the subscription command.

4. Send the email.

5. Subscriber should receive an email confirmation it was successful.